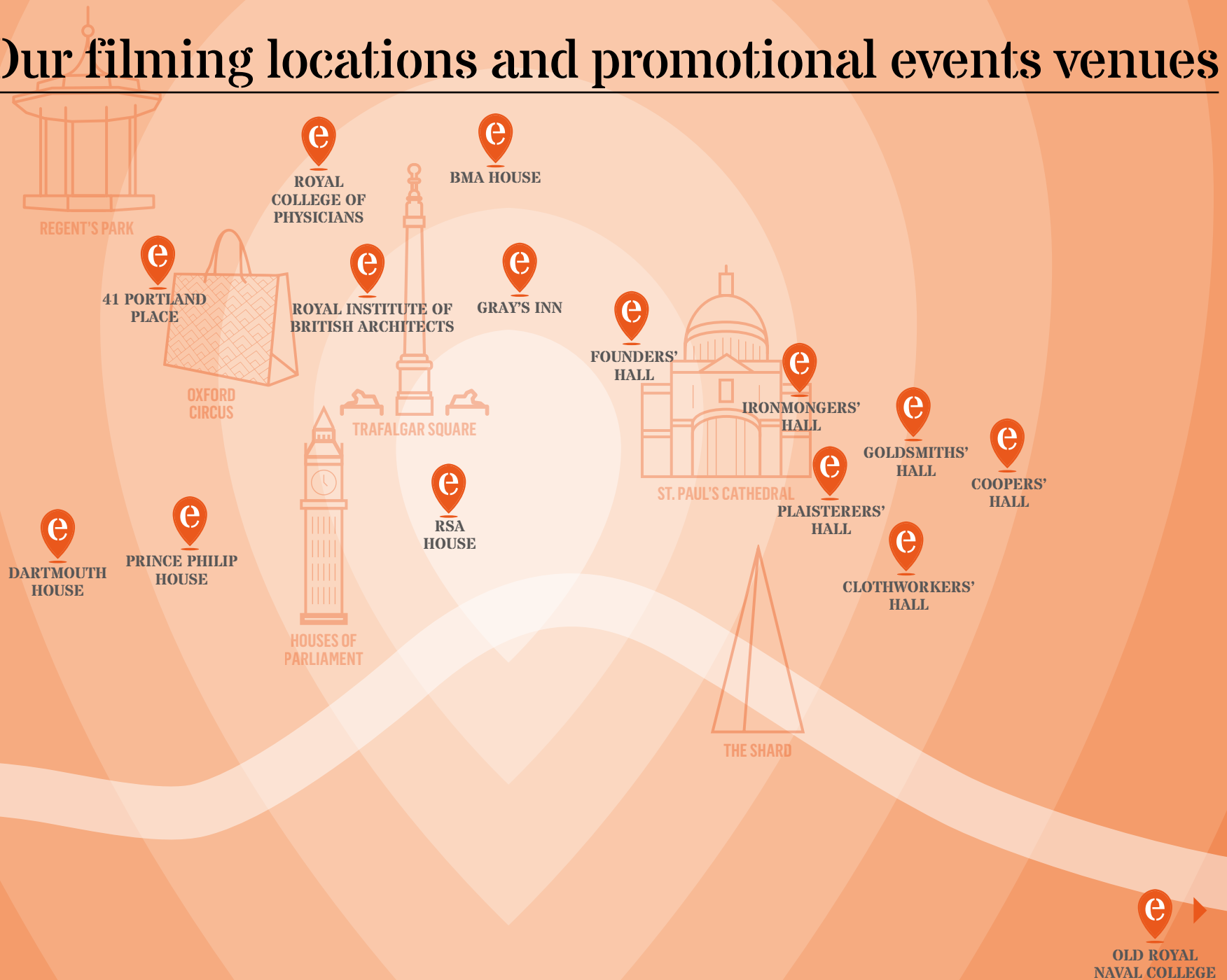


eve filming locations and promotional events

eve

Unique venues: extraordinary events

Our filming locations and promotional events venues



Leave it to eve

eve is proud to represent some of the most iconic venues in London – perfect for promotional events and filming locations. Whether it's a historical setting packed with character, or a modern space with clean lines, eve will help you track down the backdrop to your next project.



eve and the CH&CO family

eve is part of CH&CO, an independent hospitality caterer. Across each of our venues, our talented teams continue to develop innovative ways to delight.

Speak to us about how we can work with you to best represent your event brief or provide nourishing dishes to sustain your crew throughout the day.



BY CH
&CO

41 Portland Place

This venue is every bit the beautiful Georgian townhouse, yet has a modern feel. There is a spacious reception area, an elegant hallway with marble tiled flooring, ornate ceilings and antique mirrors. The original floor to ceiling sash windows adorn the house's façade and flood it with natural daylight.

The townhouse can be hired exclusively and therefore gives you the ability to display and express your brand or product in a realistic setting and allows your guests to be immersed in the experience

Eight versatile and neutral spaces, including a stunning outdoor terrace which can also be hired individually.

Need to know

Exclusive use

Total indoor capacity based on 1M + distancing: 70 standing

Access: 07:30 – 23:00

Removable vinyls permitted

Branding of reception area

Electronic screen use in Reception area

Cover all existing directional signage on live event day

Removal of existing main staircase artwork

Built in AV included

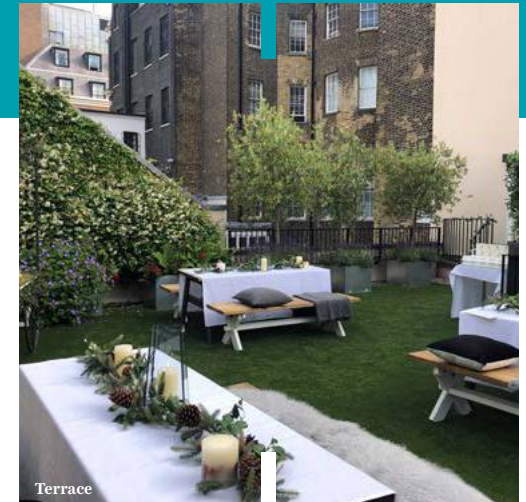
Supplier entrance located at the back of the building



Exhibition Area



The Council Chamber



Terrace



41 Portland Place

BMA House

The grand Courtyard and driveway of BMA House have provided the backdrop to the likes of Speechless (starring Minnie Driver and comedy legend John Cleese) where it became Buckingham Palace, Nike advert in 2018 (starring Harry Kane) and BBC one drama Spooks in 2011 showing the building in action in its new guise as a top London hotel.

Once home to novelist Charles Dickens, BMA House offers two outdoor spaces; the large, opulent Courtyard overlooked by two 'royal' balconies; and the botanical Garden, with feature pond, a beautiful, tranquil setting for any season.

Located in the heart of Bloomsbury but tucked away in a private setting, many of its indoor spaces provide a contemporary contrast to the feel of its heritage, period outside areas.

Need to know

Exclusive hire (weekends and evenings only)

Access: 06:00 – 23:30

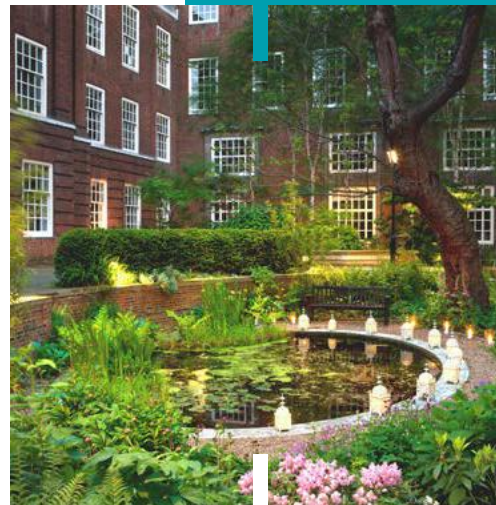
Total indoor capacity based on 1M + distancing: standing 189

22 indoor spaces, plus two outdoor areas

Natural daylight

Limited on-site / overnight parking

Branding opportunities





The Courtyard at BMA House

Clothworkers' Hall by eve Venues | Dunster Court, Mincing Lane, London EC3R 7AH

Clothworkers' Hall

Magnificence and historical richness intertwine with 21st century facilities at this vast Livery Hall. A stunning grand travertine marble staircase set beneath a regal glass dome offers the 'wow' factor on arrival. Clothworkers' Hall is superbly versatile and conveniently located. Situated in the heart of Bank, it provides serenity in its surrounding facilities.

Need to know

Exclusive use

Nine main event spaces

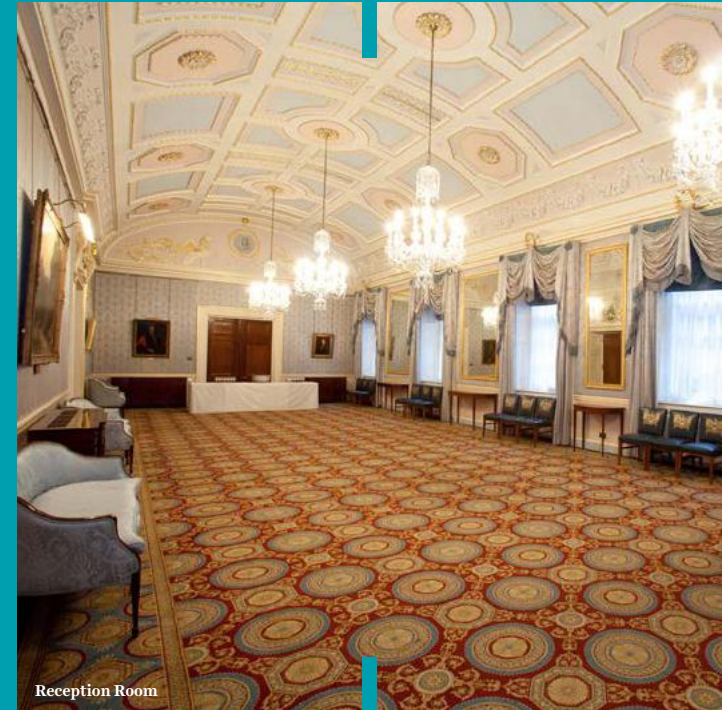
Total indoor capacity based on 1M + distancing: 44 standing

Access: 07:00 – 23:00

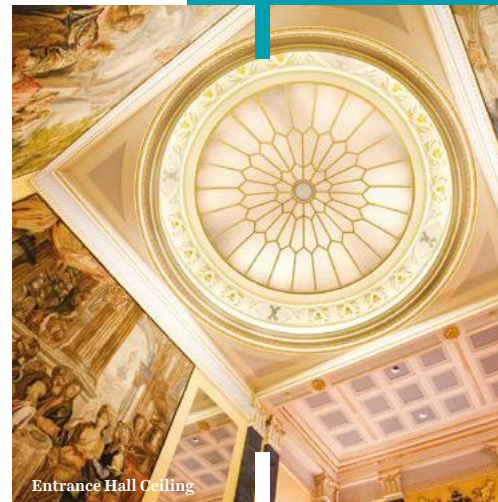
Branding opportunities

Built in AV included

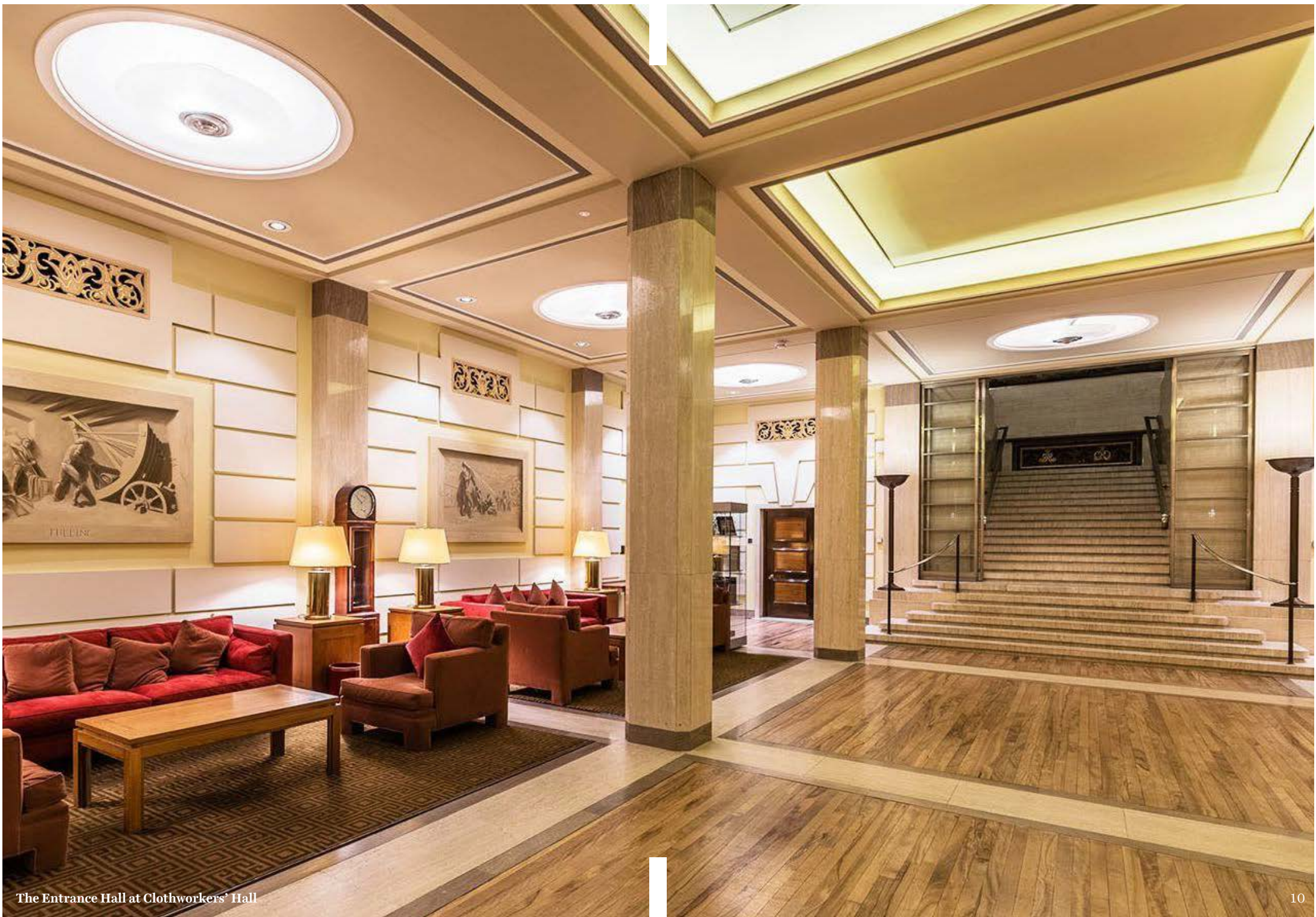
Natural daylight



Reception Room



Entrance Hall Ceiling



The Entrance Hall at Clothworkers' Hall

Coopers' Hall by eve Venues | 13 Devonshire Square, London EC2M 4TH

Coopers' Hall

In the heart of the City, this venue is one of the smallest (and oldest) Livery halls. Steeped in history, this exquisitely preserved example of a pre-Georgian townhouse is a central location with a surprisingly peaceful atmosphere of a family residence.

Need to know

Total indoor capacity based on 1M + distancing: 20 standing

Exclusive hire available

Access: 06:00 – 00:00

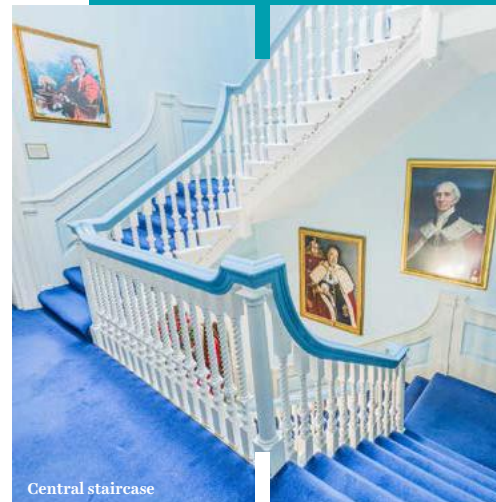
Two main rooms available over two floors

Branding opportunities

Natural daylight



Dining Room



Central staircase



Coopers' Hall main entrance



The Court Room at Coopers' Hall

Dartmouth House by eve Venues | 37 Charles Street , Mayfair, London W1J 5ED

Dartmouth House

The venue has been the backdrop to campaigns for British fashion labels, Rixo and Aquascutum and played host to the launch party for the hit Sky TV show, Catherine the Great.

Located just minutes from Piccadilly, this venue is tucked away on a quiet street and has the feel of a tranquil family residence.

Need to know

Total indoor capacity based on 1M + distancing: 55

Total courtyard capacity based on 1M+ distancing: 20 standing

Exclusive hire available

Access: 06:00 – 00:00

Four main rooms available over two floors

Branding opportunities

Natural daylight

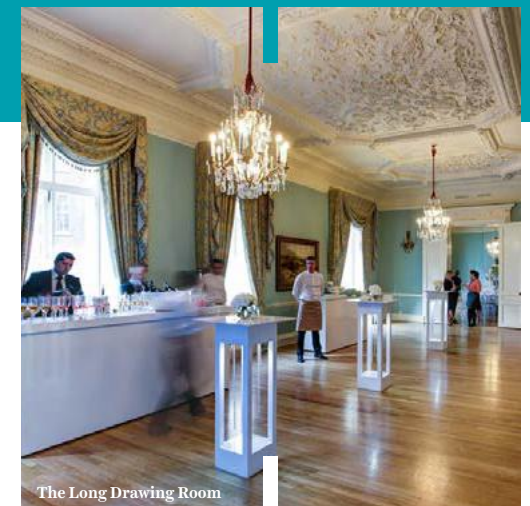
Disabled access



Central staircase



The Churchill Room



The Long Drawing Room



The Courtyard at Dartmouth House

Founders' Hall

This venue offers a warm and intimate space, with a more contemporary feel than many other Livery Halls. There are three stunning spaces across three floors, of varying designs and sizes.

Need to know

Total indoor capacity based on 1M + distancing: 30 standing

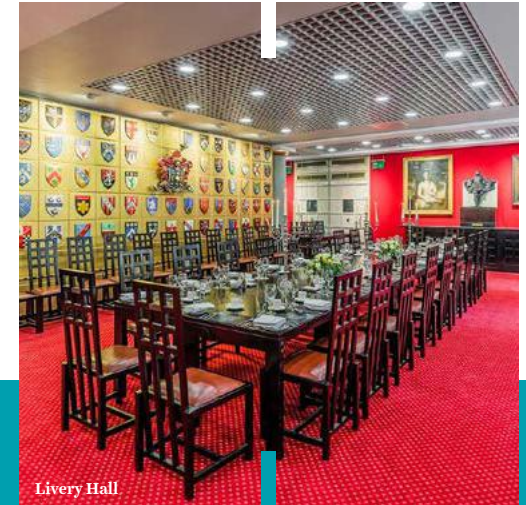
Exclusive hire available

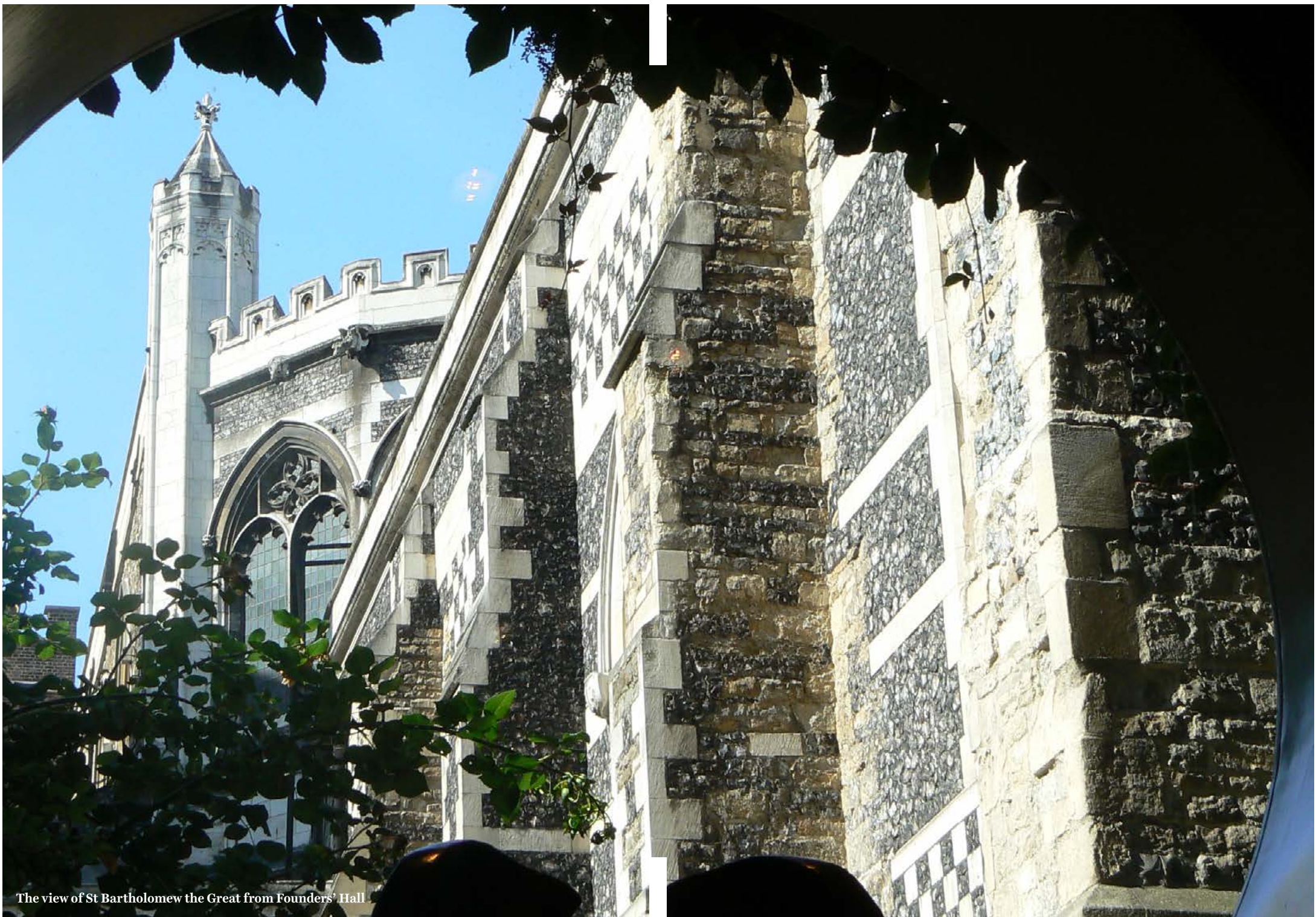
Access: 06:00 – 00:00

Three main rooms available over three floors

Branding opportunities

Natural daylight





The view of St Bartholomew the Great from Founders' Hall

Goldsmiths' Hall by eve Venues | Foster Lane, London EC2V 6BN

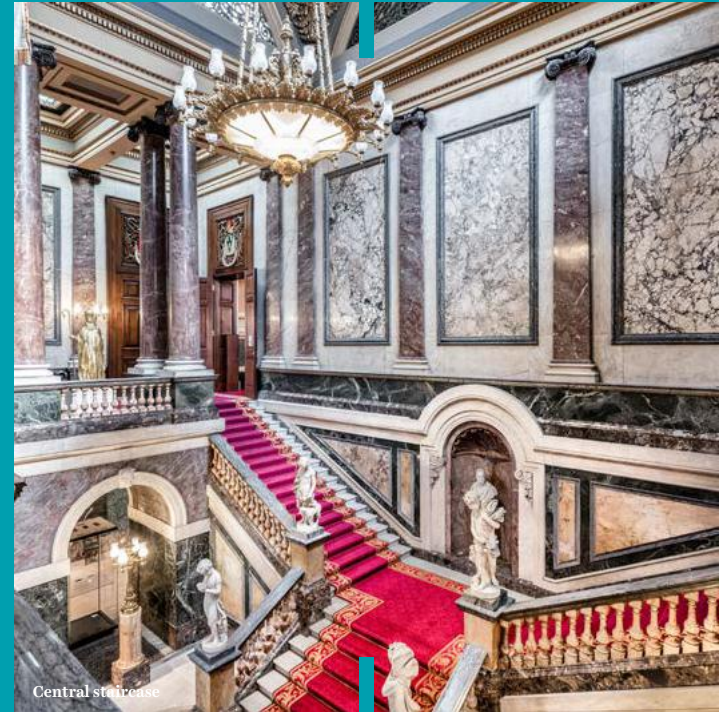
Goldsmiths' Hall

Nestled in the heart of the City and a stone's throw away from St Paul's Cathedral, Goldsmiths' Hall offers centuries of history and unrivalled opulence. Once you progress up the impressive staircase to the magnificent Hall, richly decorated in gold leaf, you will be assured that time spent here will be remarkable in every way. The elegance continues throughout the venue and you and your guests will be able to enjoy three additional wood panelled spaces, all of which are perfectly situated and offer distinctive charm.

You might recognise the Hall as the interior of Buckingham Palace in the hit Netflix show, *The Crown*.

Need to know

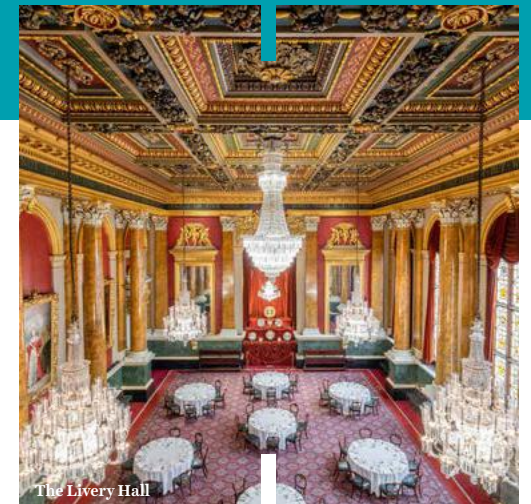
Exclusive hire available
Five main event spaces, plus outdoor location
Total indoor capacity based on 1M + distancing: 172 standing
Access: 07:00 – 23:00
Branding opportunities
Built in AV included
Natural daylight



Central staircase



The Crown (Netflix)



The Livery Hall



The Drawing Room at Goldsmiths' Hall

Gray's Inn

Gray's Inn has been home to members since before 1388 and is one of the four Inns of Court, responsible for the education and training of barristers before and after their Call to the Bar.

In a great Central London location and boasting six rooms, two outdoor squares and a beautiful five-acre private garden, this historic and versatile venue works well for a range of filming and promotional events.

Gray's Inn has previously hosted a London Fashion Week show in The Walks for acclaimed British designer, Erdem, plus has been the location for TV shows and films including The Children Act, starring Emma Thompson and Stanley Tucci.

Need to know

Total indoor capacity based on 1M + distancing: 70 standing

Access: 06:00 – 00:00

Six main rooms available, plus outdoor locations

Branding opportunities

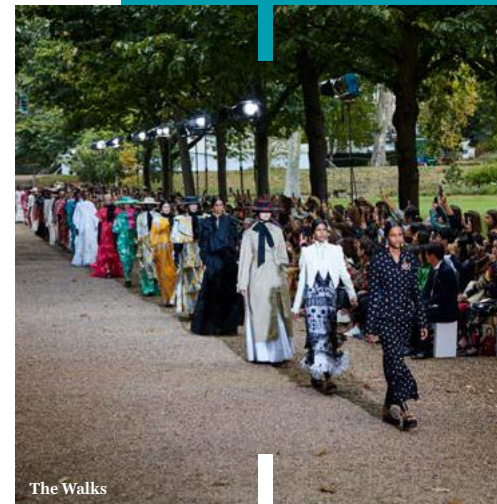
Natural daylight

Disabled access

Onsite parking – up to 200 spaces over two squares (minimal charge for full day)

Occasional furniture throughout the venue

Access to in house AV





Ironmongers' Hall by eve Venues | Shaftesbury Place, off Aldersgate Street, Barbican, London EC2Y 8AA

Ironmongers' Hall

The Tudor style Hall feels like a country house re-located to the heart of the City of London.

Combining a rich history and modern facilities, this impressive Hall offers a stately welcome and an opulent setting for any press and media bookings.

Key features include a magnificent staircase, a small, yet beautiful courtyard with a fountain and four spectacular spaces with high ceilings, oak panelling and stained-glass windows.

Need to know

Exclusive hire available - either by floor or whole venue

Total indoor capacity based on 1M + distancing: 85 Standing

Access from 07:00 – 23:00

Five separate spaces

Natural daylight

Disabled access

NCP (opposite venue)



Main entrance



Courtyard



The Drawing Room at Ironmongers' Hall

Old Royal Naval College by eve Venues | King William Walk, London SE10 9NN

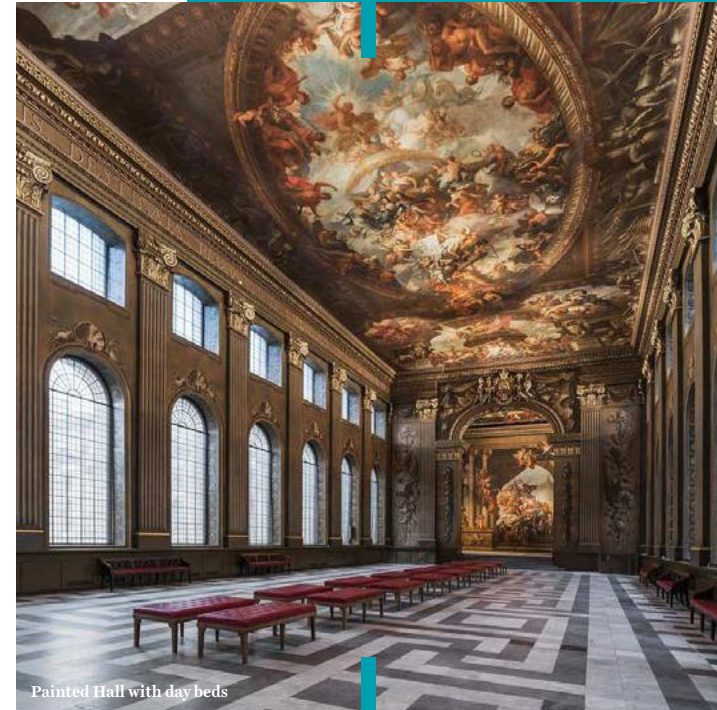
The Old Royal Naval College, Greenwich

Standing majestically on the banks of the River Thames, The Old Royal Naval College boasts vast grounds, unique courtyards, historic buildings and jaw dropping internal space including the world famous Painted Hall.

The Old Royal Naval College is one of London's favourite filming destinations and has featured in blockbuster films such as Les Misérables, Pirates of the Caribbean: On Stranger Tides, Sherlock Holmes and most recently Netflix' The Crown and Enola Holmes.

Need to know

- Exclusive hire available
- Branding opportunities
- On-site parking
- UNESCO World Heritage Site
- Multiple venue and grounds facilities



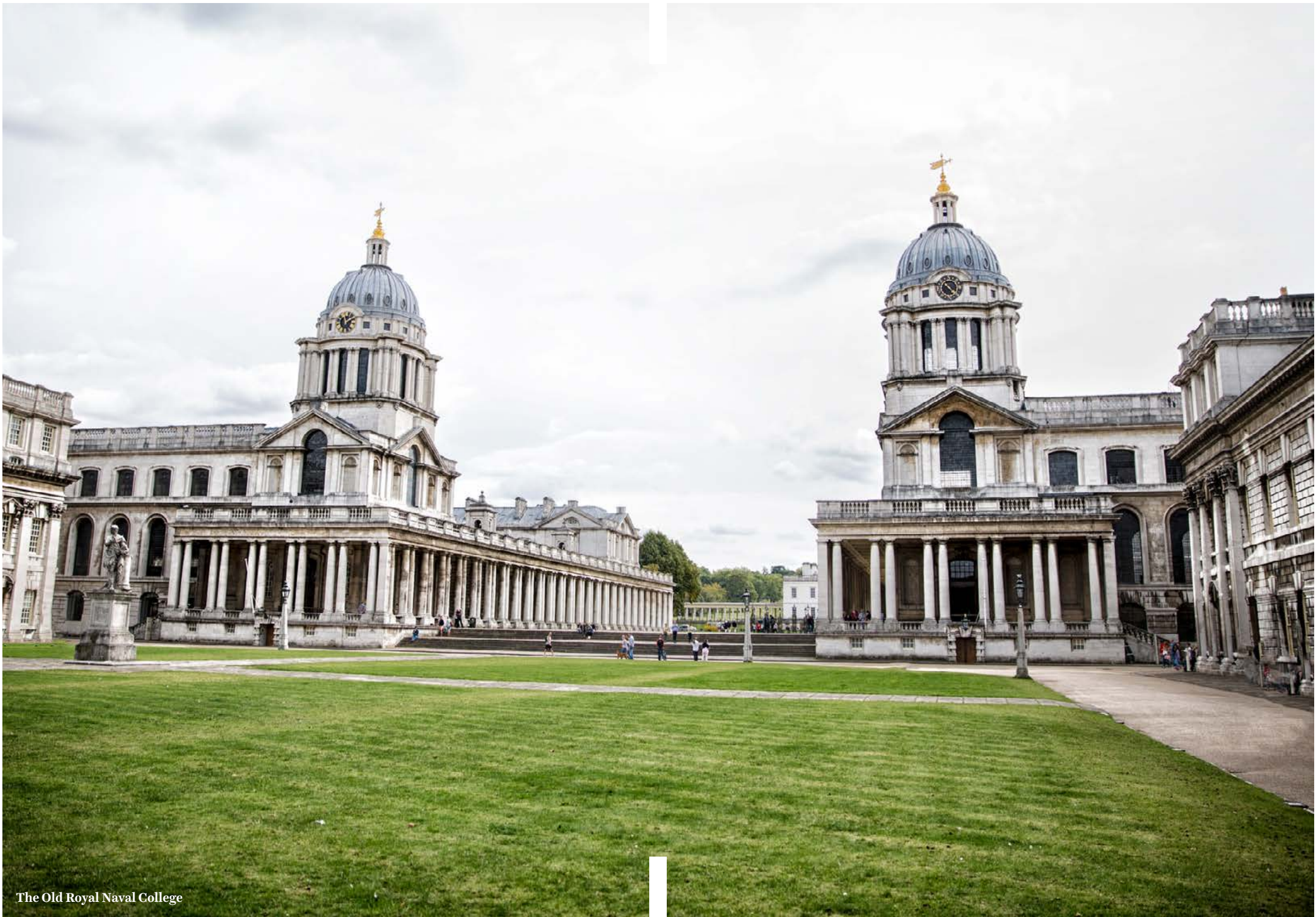
Painted Hall with day beds



Thor, The Dark World
(Marvel)



Pirates of the Caribbean
(Disney)



The Old Royal Naval College

Plasterers' Hall

The largest and one of the finest livery halls in London. The hall has décor throughout of the neoclassical style created by Robert Adam in the 18th century.

The venue, set within One London Wall designed by Foster + Partners, backs on to the remains of the original third Century London Wall. The space is flexible space with state of the art sound and AV facilities. Fully customisable integrated lighting to match your branding and hidden hanging points throughout the venue for additional lighting and sound.

Need to know

Exclusive hire available

Total indoor capacity based on 1M + distancing: 117 standing

Access from 06:00 – 01:00

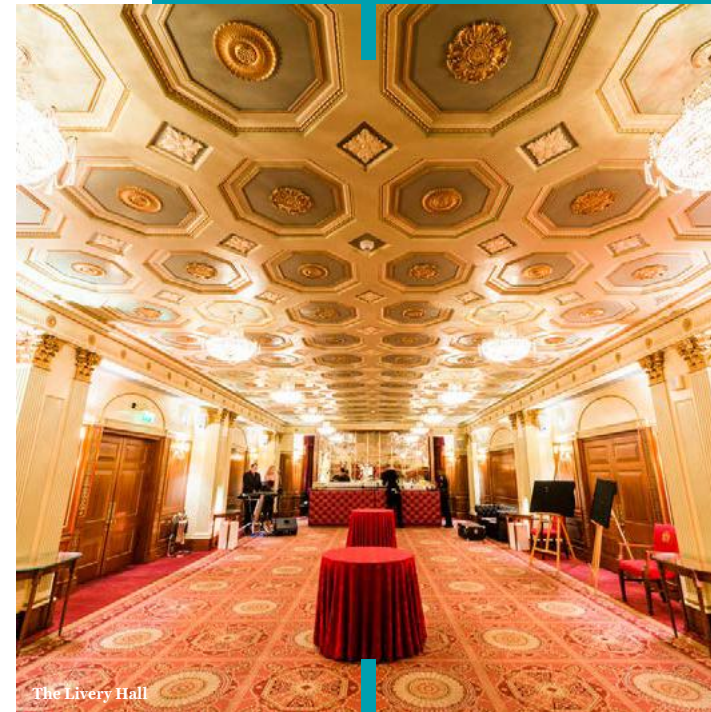
Atmospheric lighting in The Great Hall

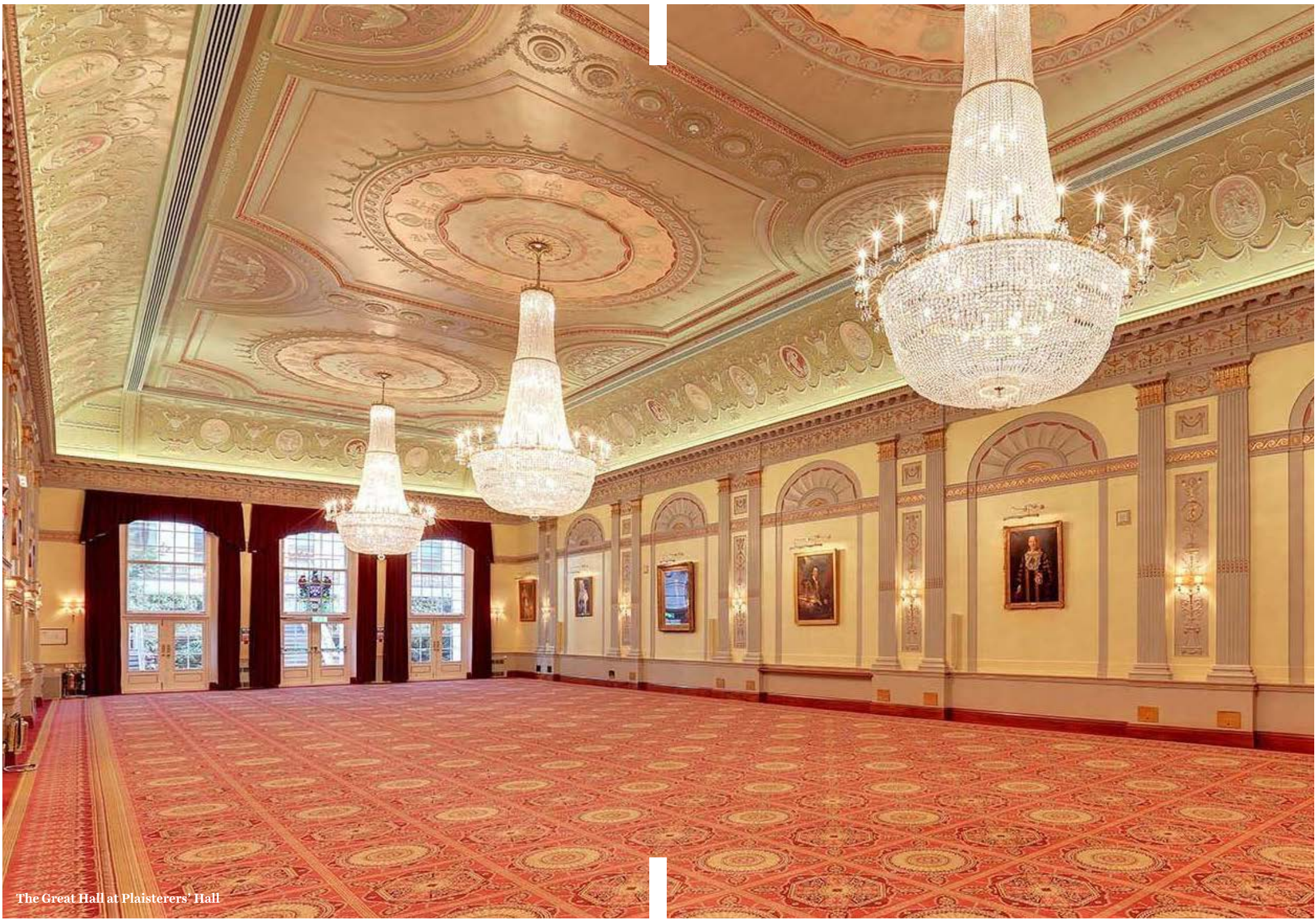
Integrated Bose® speakers throughout the Great Hall

Hidden hanging points throughout the venue for lighting and sound

Hard line internet connection which is burstable up to 100mb

Occasional furniture throughout the venue





The Great Hall at Plaisterers' Hall

Prince Philip House

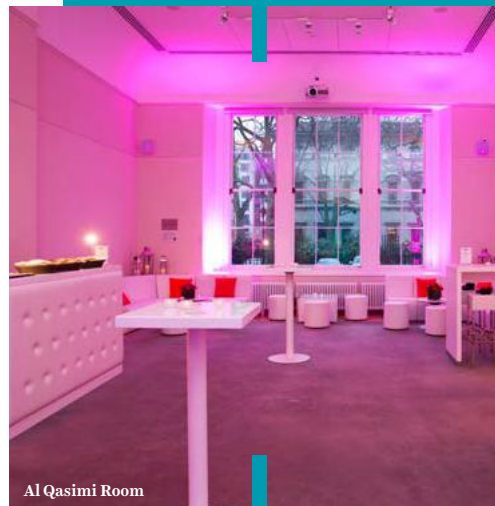
The exterior of Carlton House Terrace and the surrounding area have provided the backdrop to the likes of The Crown, The Riot Club and St Trinian's.

Inside, the bright and contemporary interior is ideal for cast quarters, hair and make-up and wardrobe. The blank canvas spaces with inter-connecting rooms provide versatile options for brands to showcase products. At the back of the building is a large terrace, offering views of The Mall.

Spaces can be hired individually, exclusively by floor or as an exclusive hire.

Need to know

- Exclusive hire available
- Total indoor capacity based on 1M + distancing: 79 standing
- Access from 06:00- 0:00
- Removable artwork throughout
- Built-in AV included
- Supplier entrance located adjacent to main building
- Branding of reception area permitted
- Electronic screen available in reception
- Up-lighting of exterior façade



Al Qasimi Room



National Grid Room



Exterior of Prince Philip House

Royal College of Physicians

The RCP is a grade 1 listed modern building overlooking Regent's Park and houses some spectacular contrasting old and new spaces which are well suited for TV dramas, movies, photo shoots, fashion shows and live broadcasts.

Some of the iconic movies and TV series that have been filmed at the venue include Wonder Woman 1984, Paddington Bear 2, Mamma Mia 2 and The Crown, season 3.

The venue has also played host to photo shoots for Wallpaper magazine, Rolex and the Paul Smith fashion show.

Need to know

- Exclusive hire available
- Access: 07:00 – 23:00 (flexible)
- Removal of existing artwork
- Supplier entrance located at the back of the building
- Natural daylight with double volume spaces
- Sweeping staircase
- Library space
- 60's architecture
- On-site parking
- Access to Audio Visual equipment and media services





Royal College of Physicians - Paul Smith Show

RIBA at 66 Portland Place

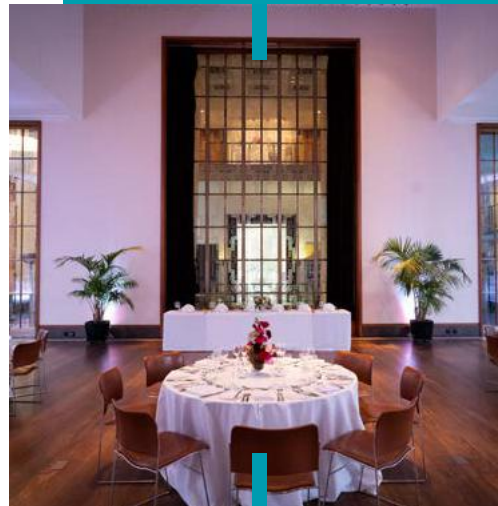
RIBA at 66 Portland Place represents the best of British architecture and is, in places, almost untouched since 1934. The versatility of the grade II* listed building with its numerous indoor and outdoor spaces set across six floors is complemented by incredible features, such as its double height entrance hall, showstopping marble staircase, Art Deco detailing, triple height atrium, wood-panelled boardrooms and terraces.

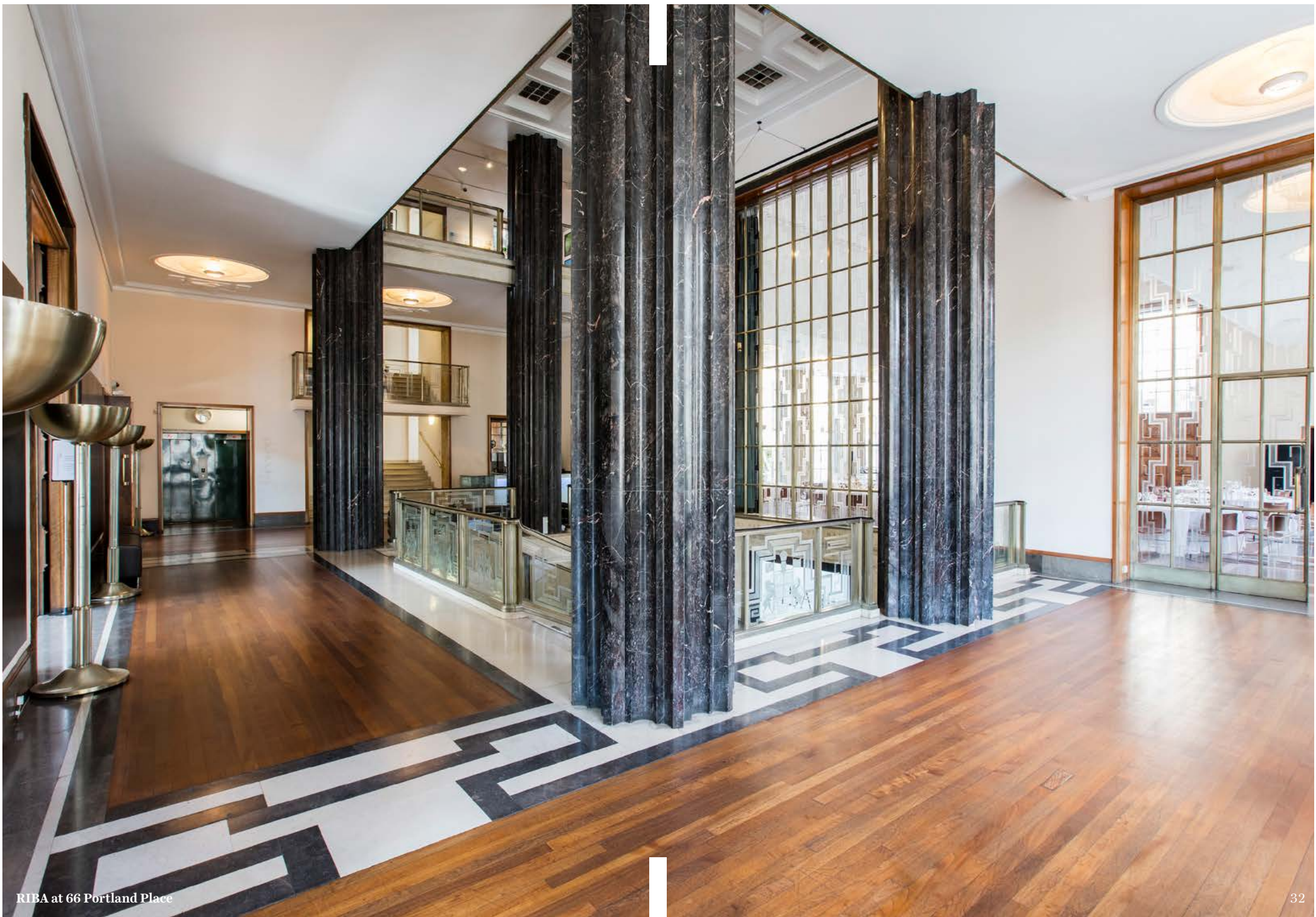
RIBA at 66 Portland Place has featured in a number of high-profile films including Goodbye Christopher Robin, Guerilla, Woman in Gold and The Man from U.N.C.L.E., as well as TV drama Silent Witness and an advert for luxury vehicle brand Jaguar.



Need to know

- Exclusive hire available
- Total indoor capacity based on 1M+ distancing: 250 (entire first floor)
- Art Deco detailing
- Set across six floors
- Outside space
- Branding opportunities
- In-house AV capabilities
- Natural daylight





RIBA at 66 Portland Place

RSA House by eve Venues | 8 John Adam Street, London WC2N 6EZ

RSA House

RSA House is hidden away on John Adam Street, steps away from The Strand in the heart of London.

The House features 11 unique spaces which include glorious Georgian architecture, large portraits, original chimney pieces, door frames and an iconic sweeping staircase with 19th century mosaics.

The underground 18th century exposed brickwork Vaults offer a complete contrast to the rest of the event spaces and are well equipped to provide an unparalleled backdrop for press events.

Fact: RSA House is one of the only locations in London with a door similar in date and style to the iconic 10 Downing Street door.



Need to know

Total indoor capacity based on 1M + distancing: 102 standing

Access available from 06:00 – 00:00

Replica 10 Downing Street exterior

Flexible branding of event rooms

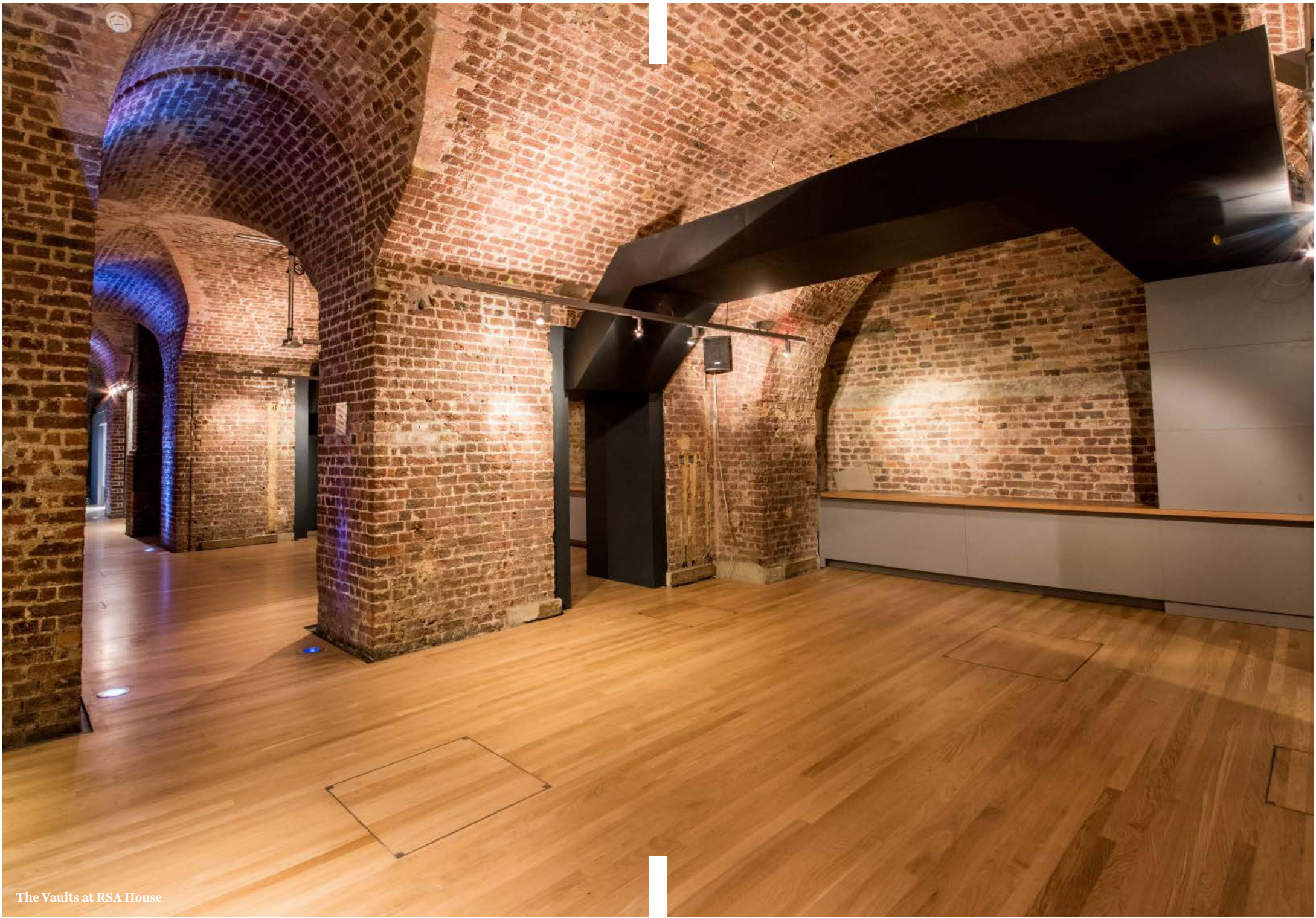
Metal bar and fixtures to hang from in Vaults

Built in AV included

Supplier load in/load out entrance located on Savoy Place with direct access to the Vaults

Exclusive entrance off the Strand for the Vaults





The Vaults at RSA House

eve

Unique venues: extraordinary events



goaskeve.com

T: 0207 871 0577

E: askeve@chandcogroup.com

@goaskeve   